

Anti-TROP2 hIgG1 Antibody(Hu2G10-5)

Product information

GM-52040AB-10	10 µg
GM-52040AB-100	100 µg
GM-52040AB-1000	1 mg

Antibody Information

Species Reactivity	Human;
Clone	Hu2G10-5
Source/Isotype	Monoclonal human IgG1, κ
Application	Flow cytometry
Specificity	Detects TROP2
Gene	TROP2
Other Names	EGP-1, EGP1, GA733-1, GA7331, GP50, M1S1, TACSTD2
Gene ID	4070(human); 102127436(cynomolgus)
Background	TROP2 is a carcinoma-associated antigen defined by the monoclonal antibody GA733. This antigen is a member of a family including at least two type I membrane proteins. It transduces an intracellular calcium signal and acts as a cell surface receptor. Mutations of this gene result in gelatinous drop-like corneal dystrophy, an autosomal recessive disorder characterized by severe corneal amyloidosis leading to blindness.
Storage	Store at 2-8°C short term (1-2 weeks).Store at ≤ -20°C long term. Avoid repeated freeze-thaw.
Formulation	Phosphate-buffered solution, pH 7.2.
Endotoxin	< 1 EU/mg, determined by LAL gel clotting assay

Data Examples

Flow cytometry

H_TROP2 HEK-293 Cell Line was stained with Anti-TROP2 hIgG1 Antibody(Hu2G10-5) (Catalog # GM-52040AB) or isotype control antibody, followed by anti-Human IgG APC-conjugated Secondary Antibody.

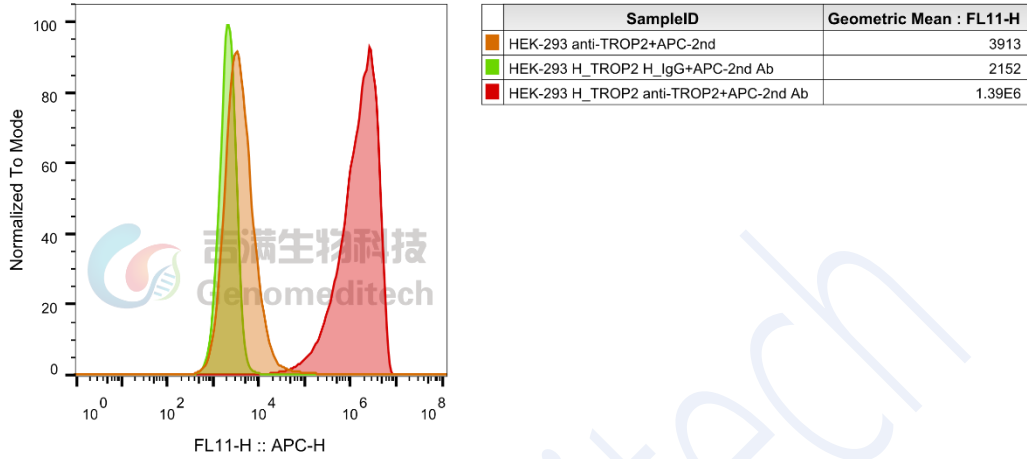


Fig. FACS

Flow cytometry

Cynomolgus_Trop2 CHO-K1 Cell Line was stained with Anti-TROP2 hIgG1 Antibody(Hu2G10-5) (Catalog # GM-52040AB) or isotype control antibody, followed by anti-Human IgG APC-conjugated Secondary Antibody.

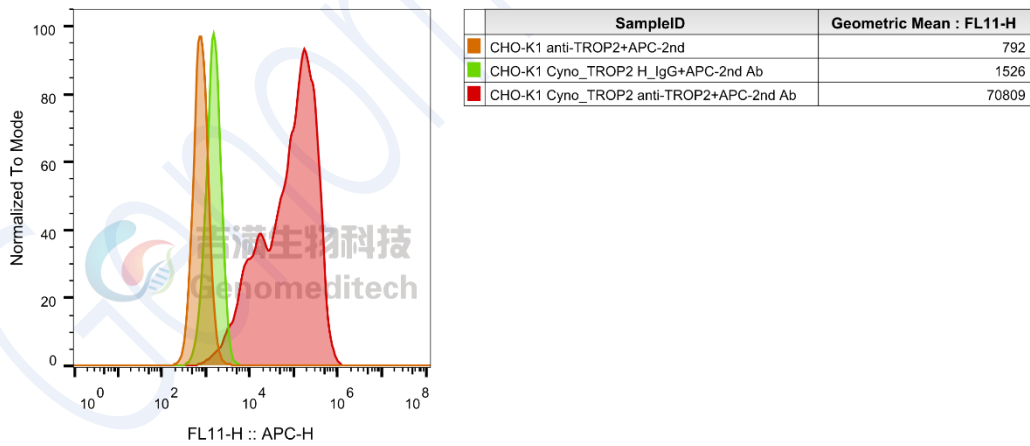


Fig. FACS